

SETTING A CENTERLINE ROAD PROFILE WITHIN TYPICAL MORAINE TOPOGRAPHY RESULTS IN CHALLENGES TO MEET ADEQUATE SIGHT LINES WHILE STAYING WITHIN EXISTING RIGHT OF WAY LIMITS.

THIS IS PARTIALLY RESOLVED BY WIDENING THE EXISTING 20m RIGHT OF WAY TO 26m WITH 3m WIDENING ON EACH SIDE OF THE ROAD. IN ADDITION, THE DITCH DEPTH HAS BEEN REDUCED WHERE POSSIBLE TO REDUCE THE OVERALL WIDTH OF THE CROSS-SECTION. SIDE AND BACK DITCH SLOPES HAVE ALSO BEEN INCREASED WHERE NECESSARY.



VIEW ALONG 8TH CONCESSION LOOKING SOUTH. APPROX. STATION. 1+660



VIEW ALONG 8TH CONCESSION LOOKING NORTH AT APPROX. STATION 2+100



VIEW ALONG 8TH CONCESSION LOOKING NORTH AT APPROX. STATION. 2+860

SCALE: H= N/A V= N/A
DESIGN: S.J.R.
DRAWN: R.A.W.
CHECKED: S.L.F.
DATE: NOV. 2018

TOWNSHIP OF KING  
8th CONCESSION  
ROAD RECONSTRUCTION  
FROM 15th SIDEROAD TO KING ROAD

TYPICAL SECTION AND  
SITE PHOTOGRAPHS



CONTRACT No. DWG. No. 217102-PIC-1

# 8th CONCESSION

KING ROAD

**BENCHMARK — ELEV. 245.209**  
SE BOLT ON BASE OF L.S.

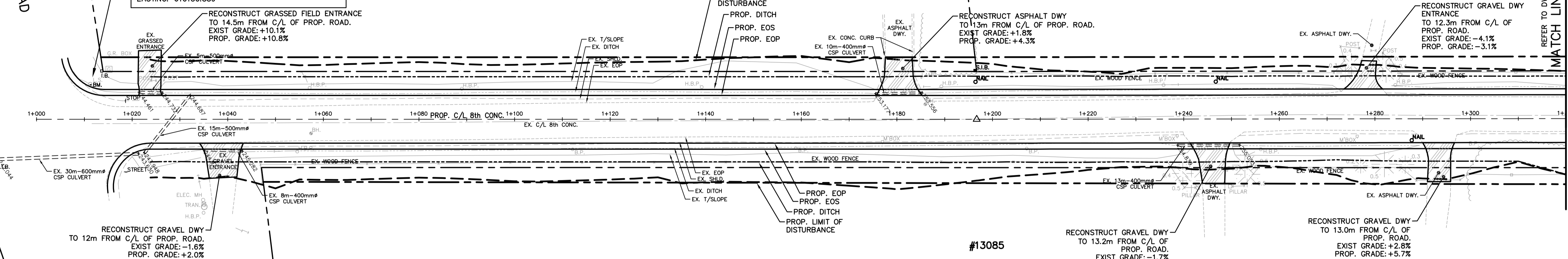
NORTHING: 4862454.503  
EASTING: 610130.889

#13040

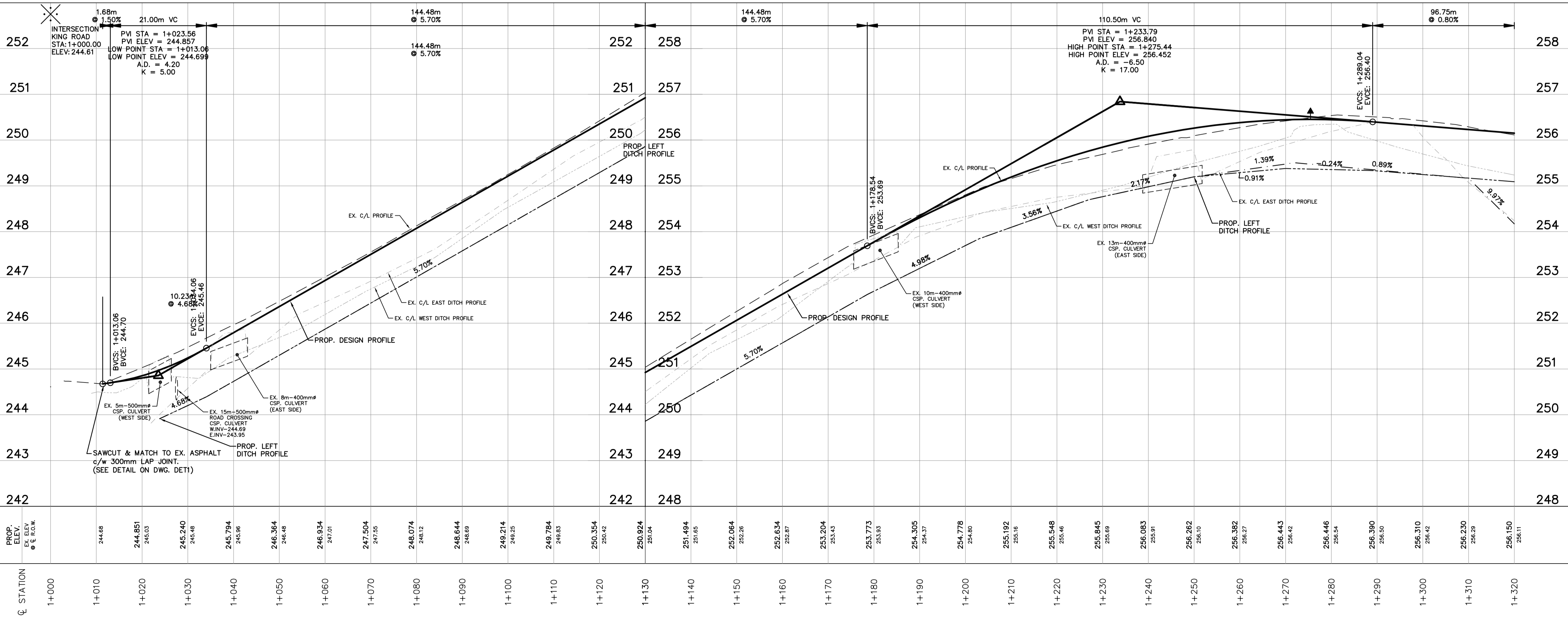
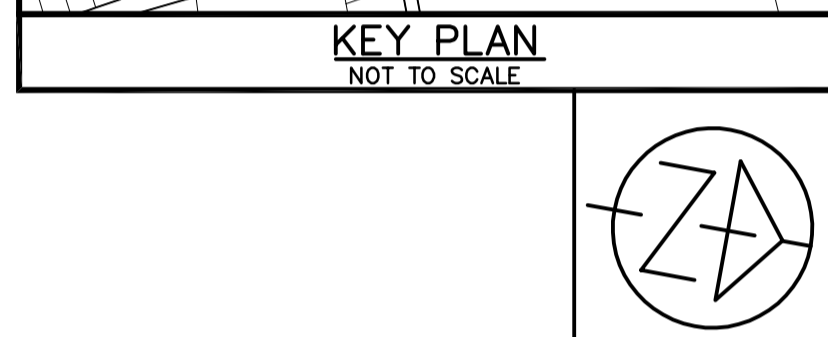
#13120

#13085

MATCH LINE STA. 1+320



ALL SIGNS TO BE SALVAGED & REPOSITIONED/RELOCATED AS NECESSARY (TYP.)  
SUPPORT POLES DURING CONSTRUCTION (TYP.)  
EX. ASPHALT & GRAVEL DRIVEWAYS TO BE REINSTATED TO PROPERTY LINE WITH 150mm GRANULAR "A" & 50mm HL3 ASPHALT (TYP.)



**NOTES**

**CONTRACT DRAWINGS**  
Contractor must verify all dimensions and be responsible for same. Any discrepancies must be reported to the Engineer before commencing work. Drawings are not to be scaled. Drawings may not be used for any purpose other than that stipulated in the contract agreement between the owner/client and the Engineer, without the express written consent of Anley & Associates Limited. Use of these drawings for any other purpose is subject to the following caution.

**CAUTION:** The information contained in this drawing is solely for the intended recipient. Any copying, distribution or use by others without the express written consent of Anley & Associates Limited is prohibited. The recipient is responsible for confirming the accuracy and completeness of the information with the engineer. The recipient assumes all risks and liabilities associated with the use of the drawings. The recipient will give and hold harmless Anley & Associates Limited from any claims whatsoever associated with or related to the use of the drawings. The recipient will not reuse any portion of the drawings for any future project without the express written permission of Anley & Associates Limited.

NO.	REVISIONS	DATE	INITIAL

Not Valid Unless Signed And Dated

# PRELIMINARY

SCALE: H= 1:500  
V= 1:50

DESIGN: S.J.R.  
DRAWN: R.A.W.  
CHECKED: S.L.F.  
DATE: FEB. 2018

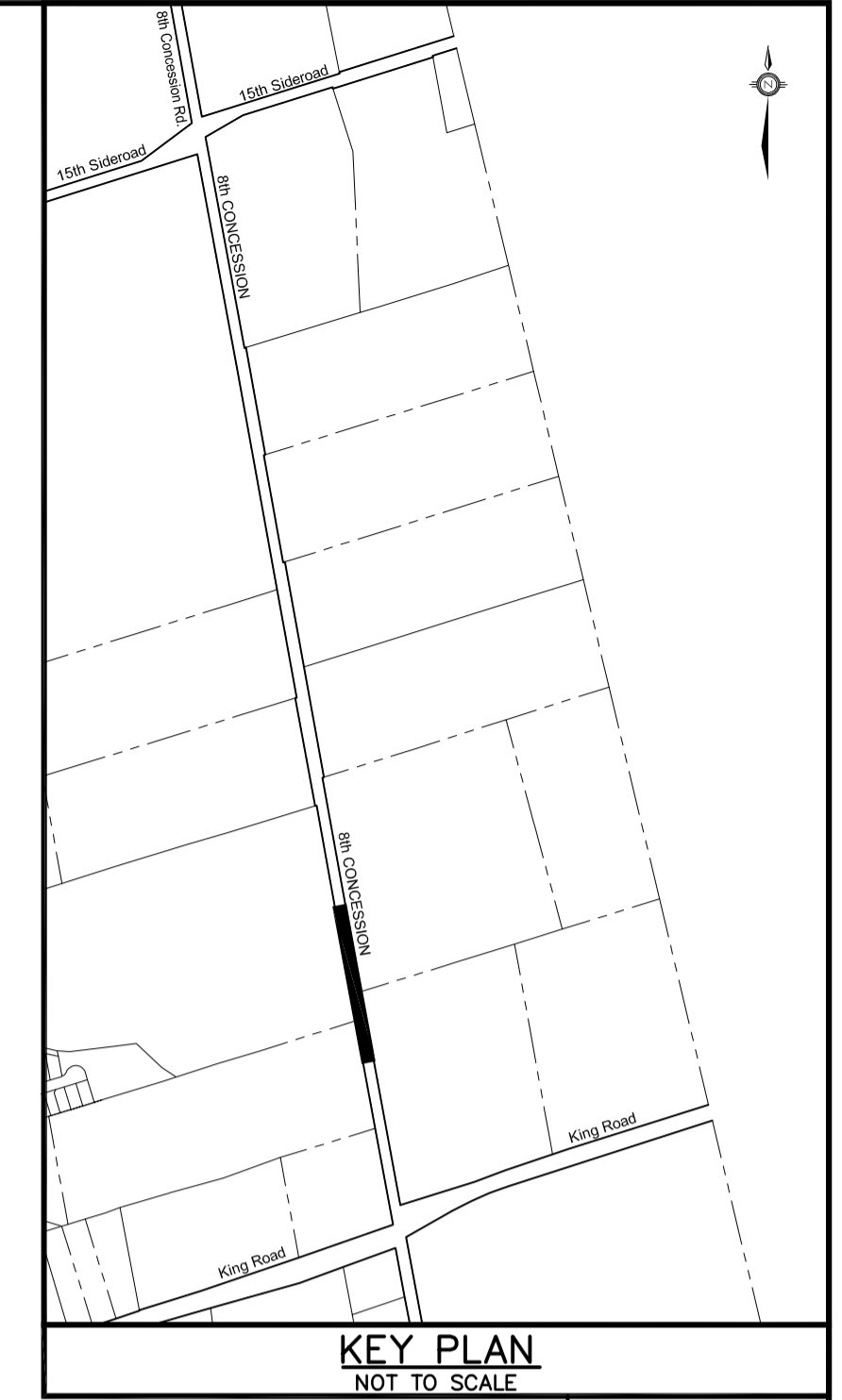
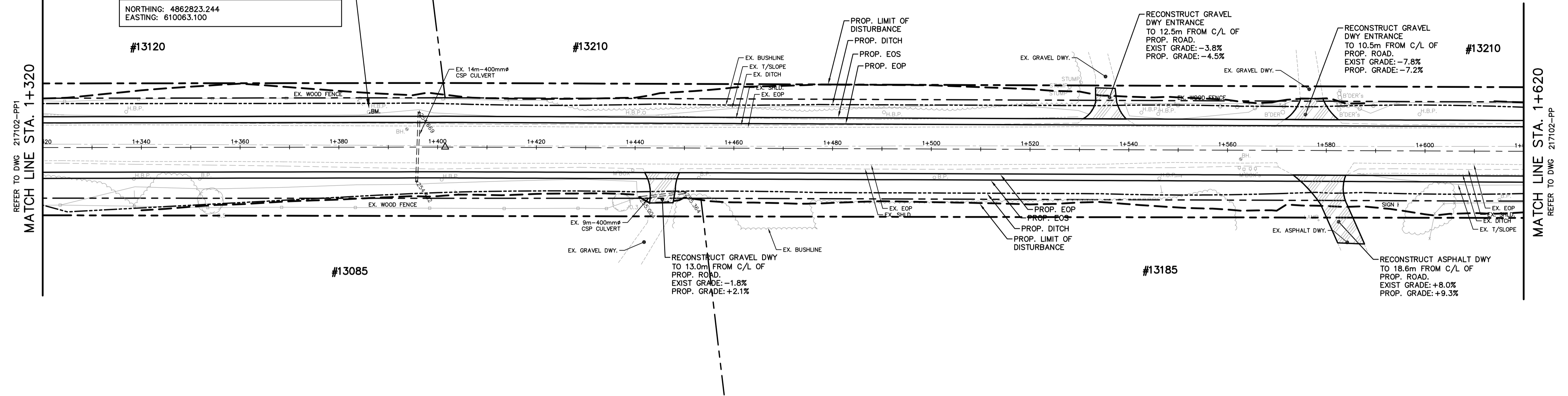
**TOWNSHIP OF KING**  
8th CONCESSION  
ROAD RECONSTRUCTION  
FROM 15th SIDEROAD TO KING ROAD

**PLAN & PROFILE**  
8th CONCESSION  
STA. 1+000 TO STA. 1+320

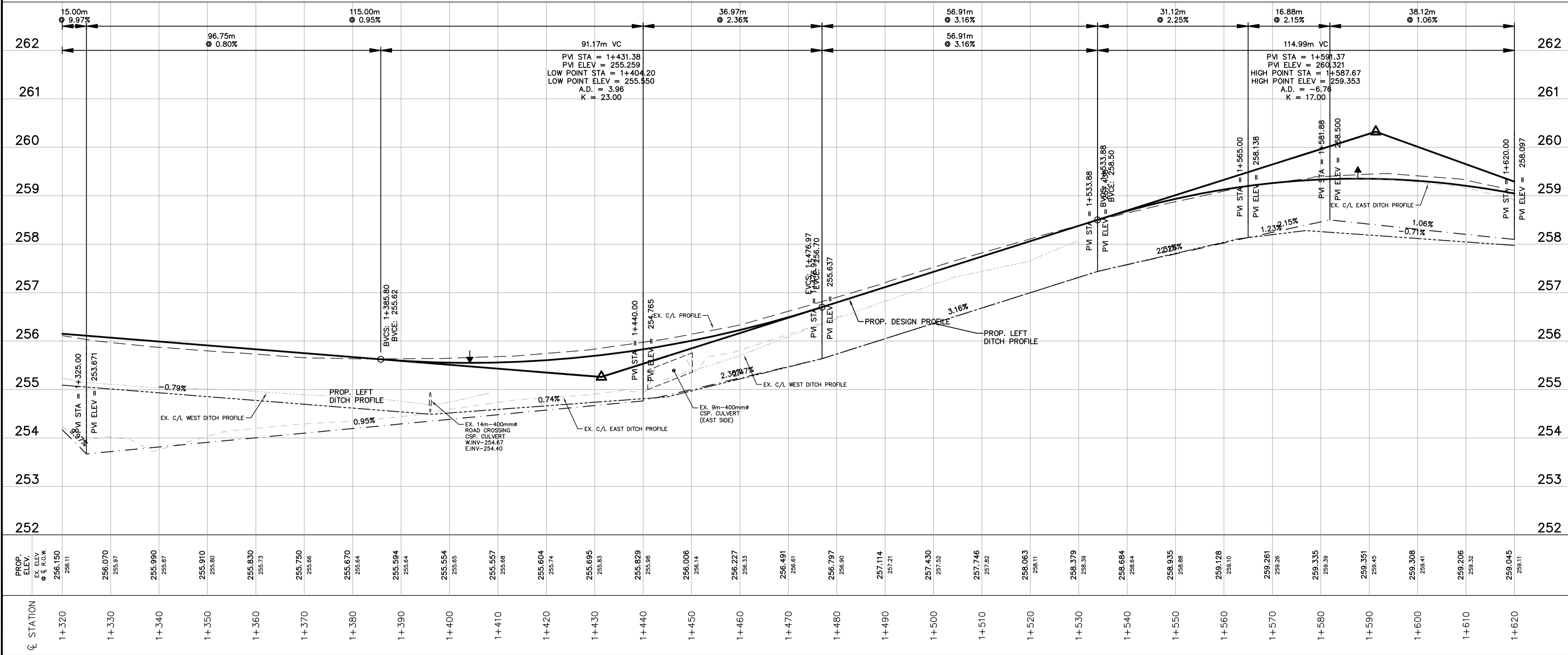
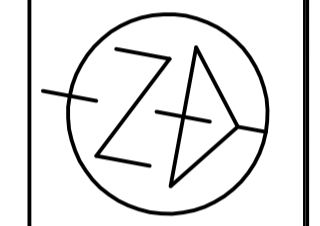
CONTRACT No.      DWG. No. 217102-PP1

# 8th CONCESSION

**BENCHMARK — ELEV. 255.407**  
 NAIL & WASHER IN H.B.P.  
 NORTHING: 4862823.244  
 EASTING: 610063.100



**KEY PLAN**  
NOT TO SCALE



**NOTES**

**CONTRACT DRAWINGS**  
 Contractor shall verify all dimensions and be responsible for same. Any discrepancies must be reported to the Engineer before commencing work. Drawings are not to be scaled. Drawings may not be used for any purpose other than that stipulated in the contract agreement between the contractor and the Engineer, without the express written consent of Anley & Associates Limited. Use of these drawings by any party for any other purpose is subject to the following caution.

**CAUTION:** The information contained in this drawing is solely for the intended recipient. Any copying, distribution or use by others without the express written consent of Anley & Associates Limited is prohibited. The recipient is responsible for confirming the accuracy and completeness of the information with the originator. The recipient assumes all risks and liabilities associated with the use of the drawings. The recipient will save and hold harmless Anley & Associates Limited from any claims whatsoever associated with or related to the use of the drawings. This recipient will not reuse any portion of the drawings for any future project without the express written permission of Anley & Associates Limited.

NO.	REVISIONS	DATE	INITIAL

Not Valid Unless Signed And Dated

# PRELIMINARY

SCALE: H= 1:500  
V= 1:50

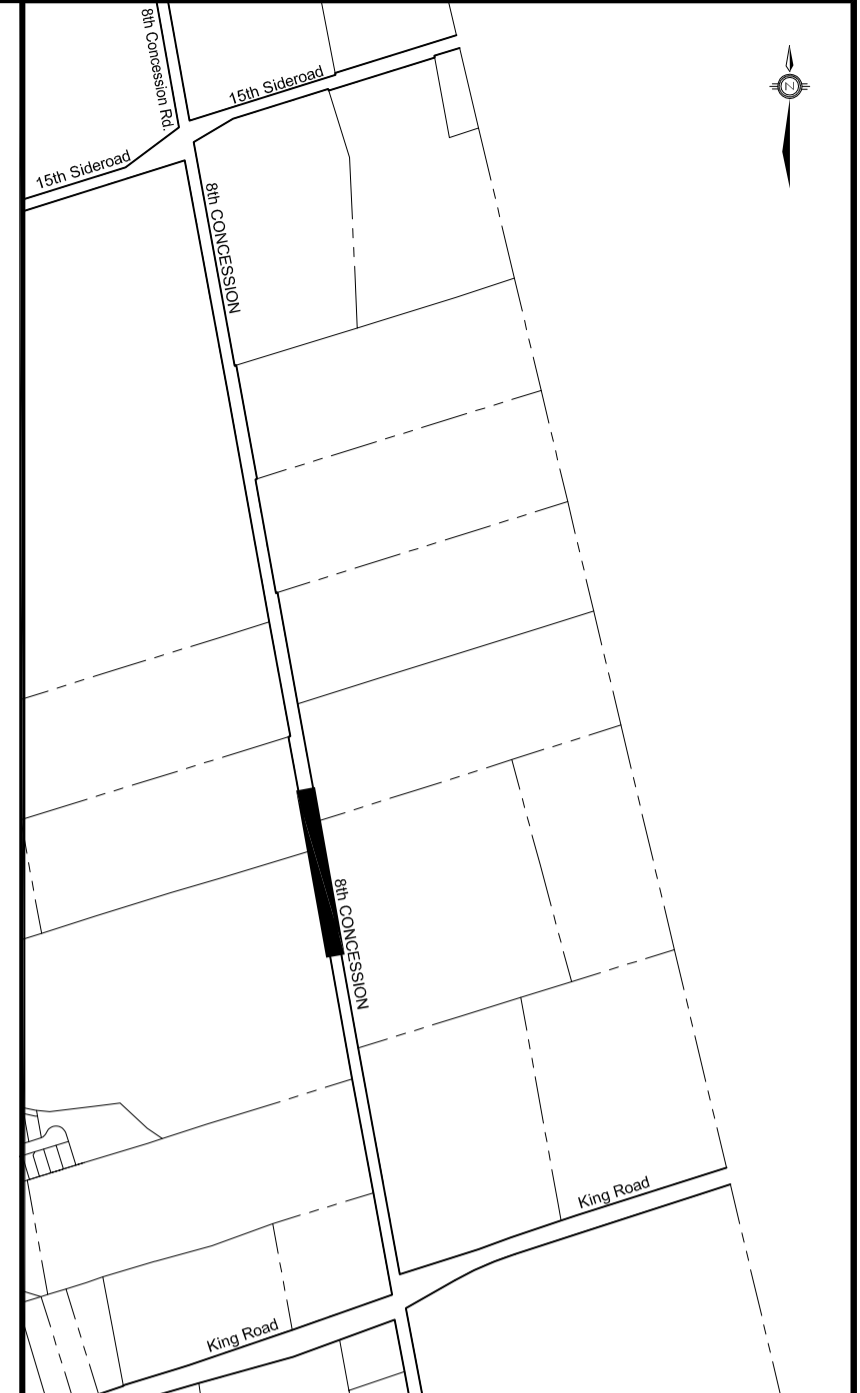
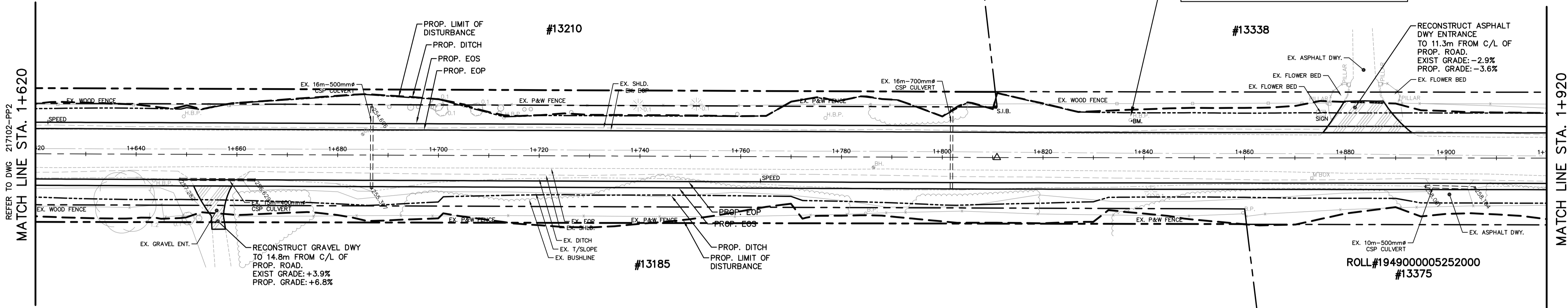
DESIGN: S.J.R.  
DRAWN: R.A.W.  
CHECKED: S.L.F.  
DATE: FEB. 2018

**TOWNSHIP OF KING**  
**8th CONCESSION**  
**ROAD RECONSTRUCTION**  
 FROM 15th SIDEROAD TO KING ROAD

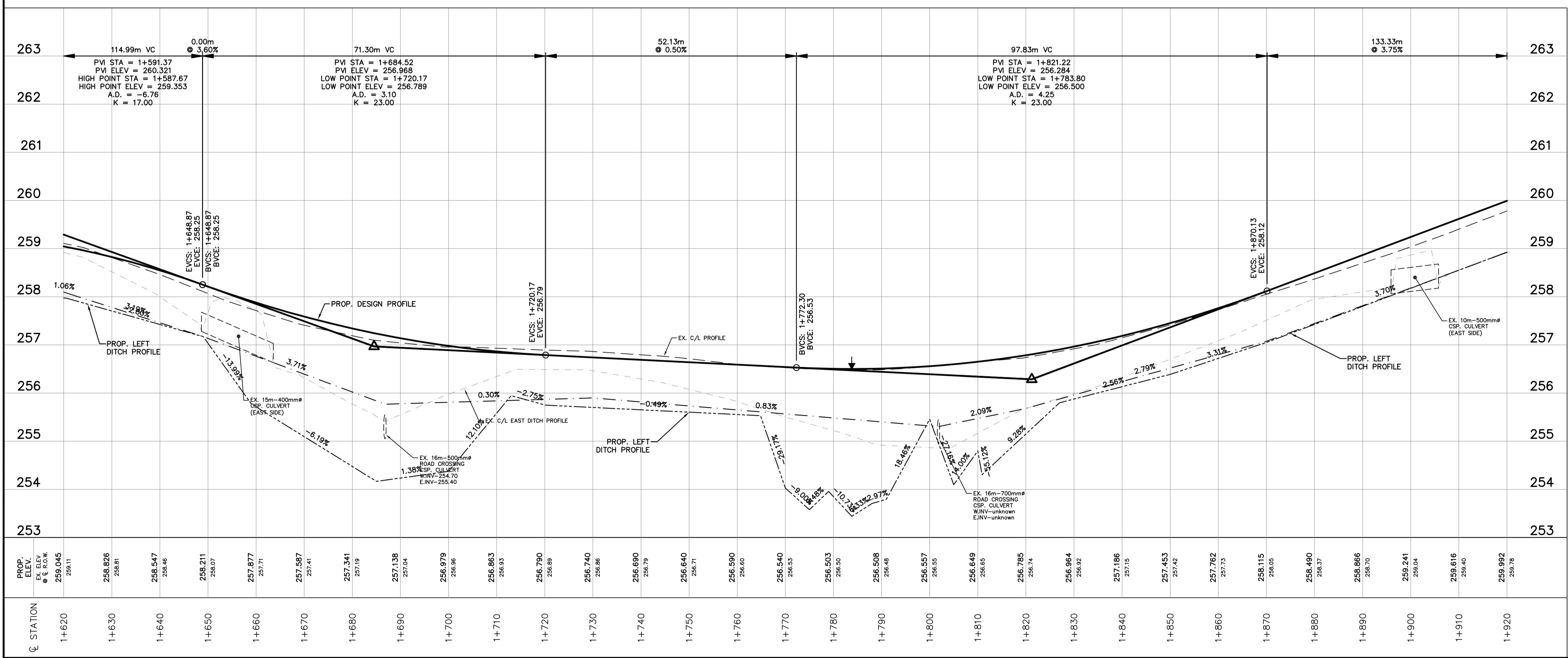
**PLAN & PROFILE**  
**8th CONCESSION**  
 STA. 1+320 TO STA. 1+620

**CONTRACT No.**      **DWG. No. 217102-PP2**

# 8th CONCESSION



KEY PLAN  
NOT TO SCALE



C. STATION	PROP. ELEV. @ C.S.	EX. ELEV. @ C.S.	PROP. GRADE	EX. GRADE	PROP. DITCH GRADE	EX. DITCH GRADE	PROP. DITCH ELEV. @ C.S.	EX. DITCH ELEV. @ C.S.
1+620	259.11	259.045						
1+630	258.826	258.81						
1+640	258.547	258.46						
1+650	258.211	258.07						
1+660	257.877	257.71						
1+670	257.587	257.41						
1+680	257.341	257.19						
1+690	257.138	257.04						
1+700	256.979	256.86						
1+710	256.863	256.83						
1+720	256.790	256.69						
1+730	256.740	256.66						
1+740	256.690	256.75						
1+750	256.640	256.71						
1+760	256.590	256.60						
1+770	256.540	256.53						
1+780	256.503	256.50						
1+790	256.508	256.46						
1+800	256.557	256.55						
1+810	256.649	256.65						
1+820	256.785	256.74						
1+830	256.964	256.92						
1+840	257.186	257.15						
1+850	257.463	257.42						
1+860	257.762	257.73						
1+870	258.115	258.05						
1+880	258.490	258.37						
1+890	258.866	258.70						
1+900	259.241	259.04						
1+910	259.616	259.40						
1+920	259.992	259.78						

NOTES

**CONTRACT DRAWINGS**  
Contractor must verify all dimensions and be responsible for same. Any discrepancies must be reported to the Engineer before commencing work. Drawings are not to be scaled. Drawings may not be used for any purpose other than that stipulated in the contract agreement between the commissioner and the Engineer without the express written consent of Ainley & Associates Limited. Use of these drawings by any party for any other purpose is subject to the following cautions.

**CAUTION:** The information contained in this drawing is solely for the intended recipient. Any copying, distribution or use by others without the express written consent of Ainley & Associates Limited is prohibited. The recipient is responsible for confirming the accuracy and completeness of the information with the originator. The recipient assumes all risks and liabilities associated with the use of the drawings. The recipient will not hold harmless Ainley & Associates Limited from any claims whatsoever associated with or related to the use of the drawings. The recipient will not reuse any portion of the drawings for any future project without the express written permission of Ainley & Associates Limited.

NO.	REVISIONS	DATE	INITIAL

Not Valid Unless Signed And Dated

## PRELIMINARY

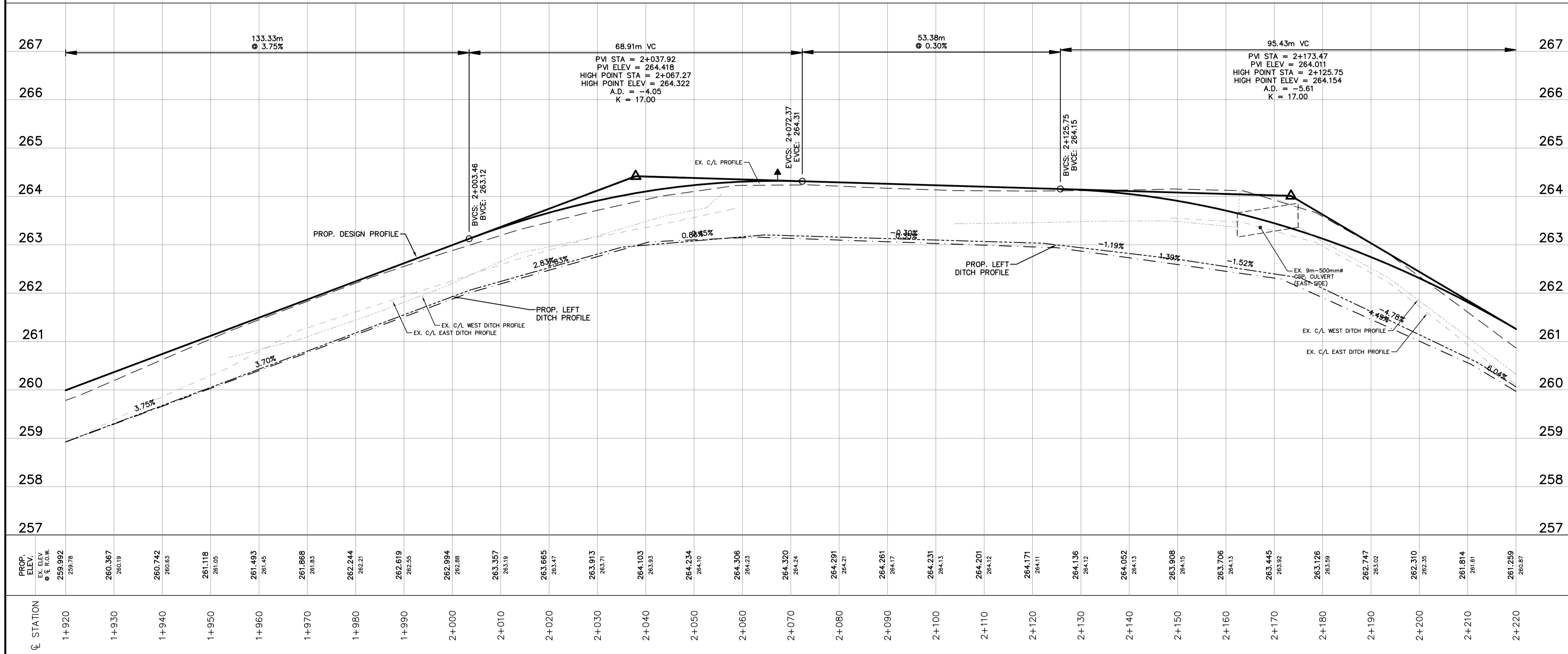
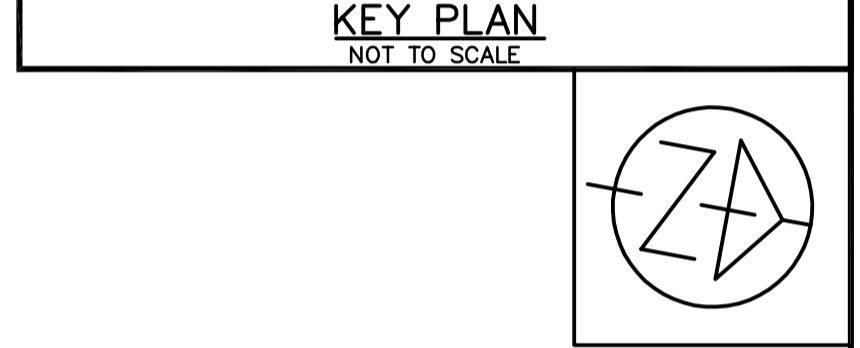
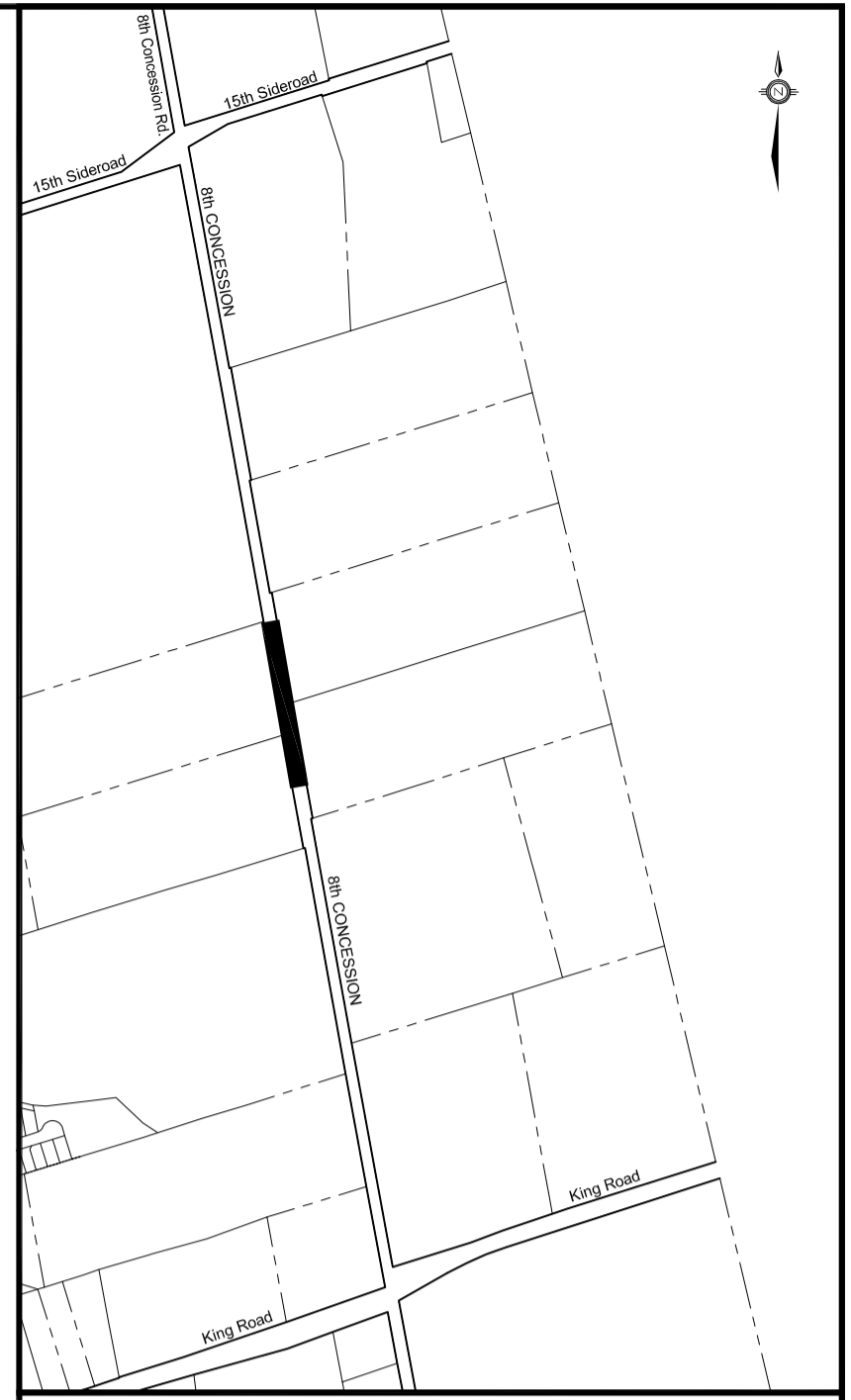
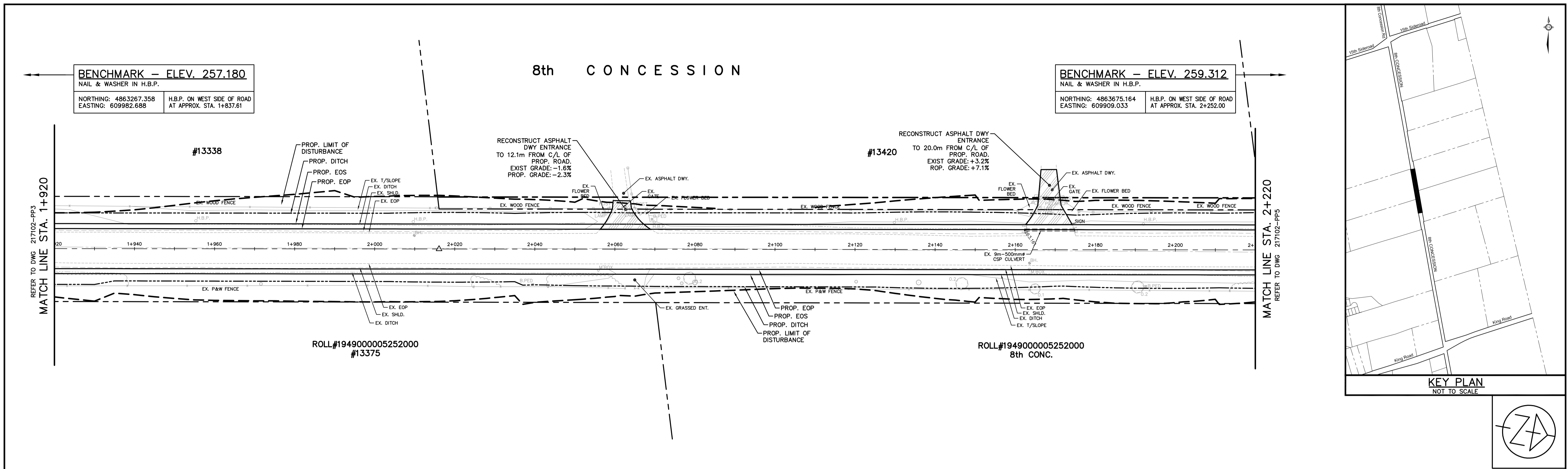
SCALE: H = 1:500  
V = 1:50

DESIGN: S.J.R.  
DRAWN: R.A.W.  
CHECKED: S.L.F.  
DATE: FEB. 2018

**TOWNSHIP OF KING**  
8th CONCESSION  
ROAD RECONSTRUCTION  
FROM 15th SIDEROAD TO KING ROAD

**PLAN & PROFILE**  
8th CONCESSION  
STA. 1+620 TO STA. 1+920

CONTRACT No.      DWG. No. 217102-PP3



NOTES

**CONTRACT DRAWINGS**  
Contractor must verify all dimensions and be responsible for same. Any discrepancies must be reported to the Engineer before commencing work. Drawings are not to be scaled. Drawings may not be used for any purpose other than that stipulated in the contract agreement between the owner/contractor and the Engineer, without the express written consent of Anley & Associates Limited. Use of these drawings for any other purpose is subject to the following caution:

**CAUTION:** The information contained in this drawing is solely for the intended recipient. Any copying, distribution or use by others without the express written consent of Anley & Associates Limited is prohibited. The recipient is responsible for confirming the accuracy and completeness of the information with the engineer. The recipient assumes all risks and liabilities associated with the use of the drawings. The recipient will give and hold harmless Anley & Associates Limited from any claims whatsoever associated with or related to the use of the drawings. The recipient will not reuse any portion of the drawings for any future project without the express written permission of Anley & Associates Limited.

NO.	REVISIONS	DATE	INITIAL

Not Valid Unless Signed And Dated

# PRELIMINARY

SCALE:	H= 1:500	V= 1:50
DESIGN:	S.J.R.	
DRAWN:	R.A.W.	
CHECKED:	S.L.F.	
DATE:	FEB. 2018	

**TOWNSHIP OF KING**  
8th CONCESSION  
ROAD RECONSTRUCTION  
FROM 15th SIDEROAD TO KING ROAD

**PLAN & PROFILE**  
8th CONCESSION  
STA. 1+920 TO STA. 2+220

**Anley GROUP** CONSULTING ENGINEERS PLANNERS

CONTRACT No.      DWG. No. 217102-PP4

8th CONCESSION

**BENCHMARK - ELEV. 259.312**  
 NAIL & WASHER IN H.B.P.  
 NORTHING: 4863675.164  
 EASTING: 609909.033

ROLL#194900005290100  
 8th CONC.

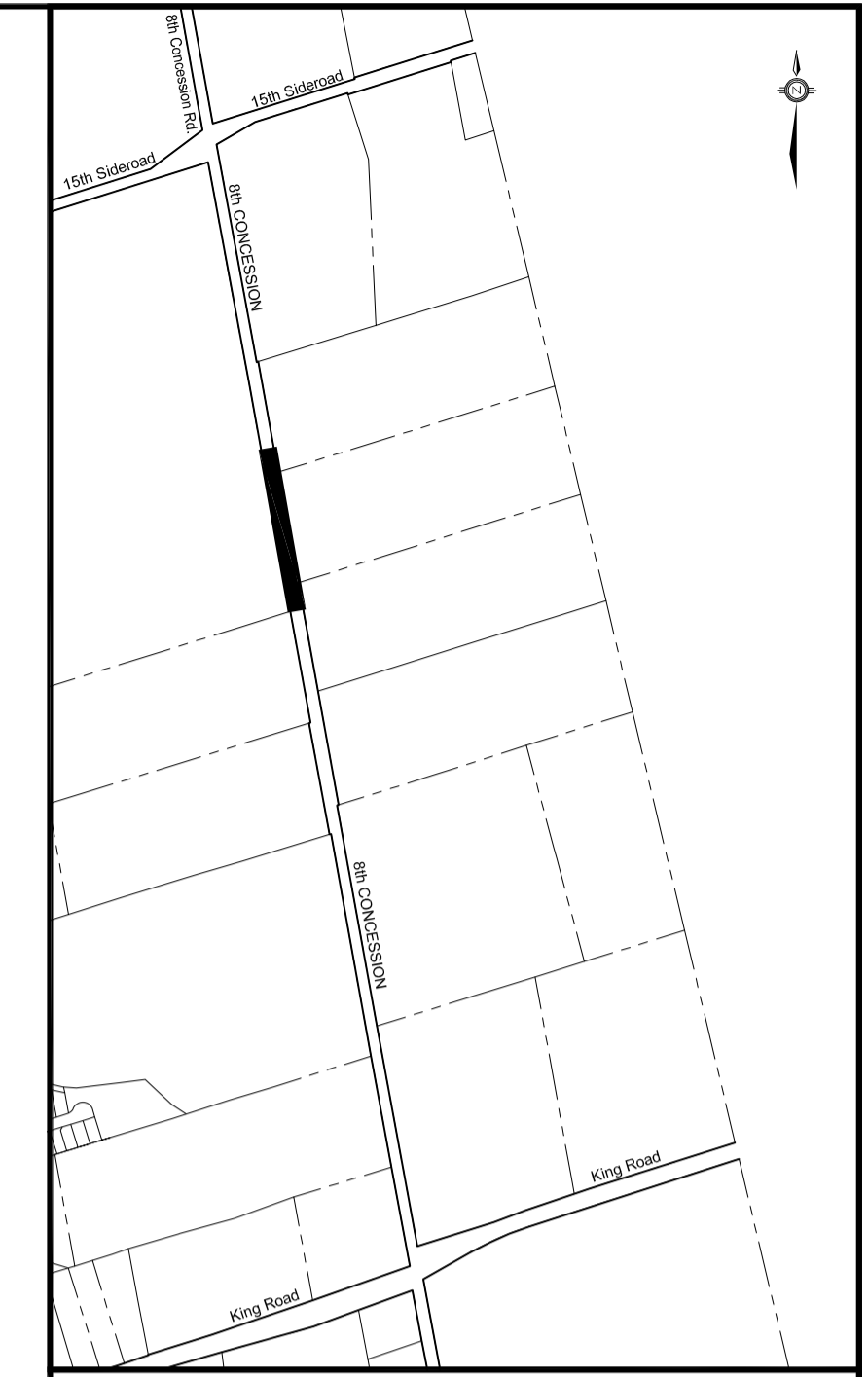
ROLL#194900005252000  
 8th CONC.

#13485

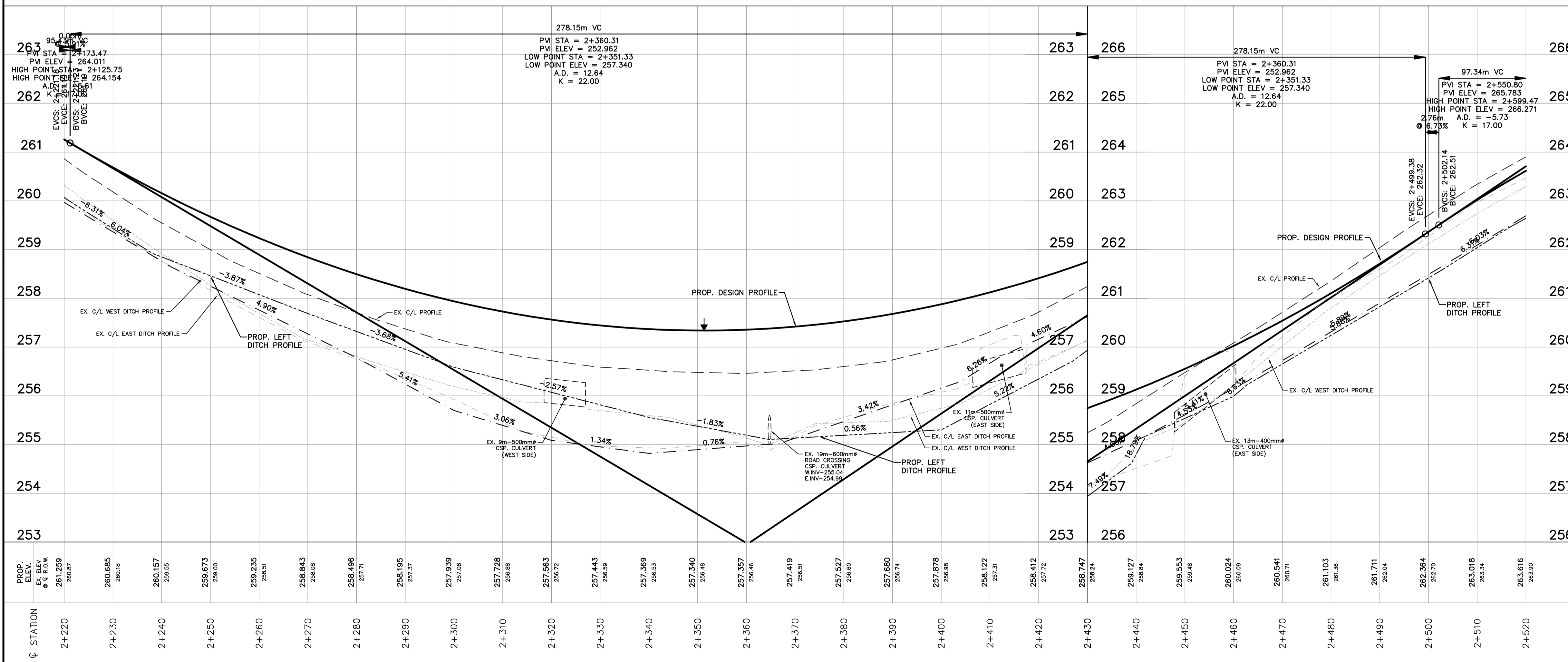
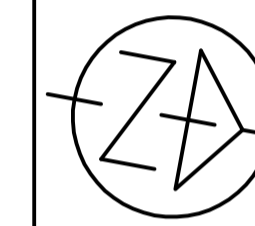
#13565

REFER TO DWG 217102-PP4  
 MATCH LINE STA. 2+220

MATCH LINE STA. 2+520  
 REFER TO DWG 217102-PP6



KEY PLAN  
 NOT TO SCALE



**NOTES**

**CONTRACT DRAWINGS**  
 Contractor must verify all dimensions and be responsible for same. Any discrepancies must be reported to the Engineer before commencing work. Drawings are not to be scaled. Drawings may not be used for any purpose other than that stipulated in the contract agreement between the contractor and the Engineer, without the express written consent of Anley & Associates Limited. Use of these drawings by any party for any other purpose is subject to the following caution.

**CAUTION:** The information contained in this drawing is solely for the intended recipient. Any copying, distribution or use by others without the express written consent of Anley & Associates Limited is prohibited. The recipient is responsible for confirming the accuracy and completeness of the information with the engineer. The recipient assumes all risks and liabilities associated with the use of the drawings. The recipient will give and hold harmless Anley & Associates Limited from any claims whatsoever associated with or related to the use of the drawings. The recipient will not reuse any portion of the drawings for any future project without the express written permission of Anley & Associates Limited.

NO.	REVISIONS	DATE	INITIAL

Not Valid Unless Signed And Dated

**PRELIMINARY**

SCALE: H= 1:500  
 V= 1:50

DESIGN: S.J.R.  
 DRAWN: R.A.W.  
 CHECKED: S.L.F.  
 DATE: FEB. 2018

**TOWNSHIP OF KING**  
 8th CONCESSION  
 ROAD RECONSTRUCTION  
 FROM 15th SIDEROAD TO KING ROAD

**PLAN & PROFILE**  
 8th CONCESSION  
 STA. 2+220 TO STA. 2+520

**Anley** CONSULTING ENGINEERS PLANNERS

CONTRACT No.      DWG. No. 217102-PP5

Plotted by: SRUSSELL on November 23, 2018 at 10:32am  
 File: V:\217102\Drawings\217102-Option-8th Conc.dwg Layout: PPS

8th CONCESSION

**BENCHMARK - ELEV. 259.312**  
 NAIL & WASHER IN H.B.P.  
 NORTHING: 4863675.164  
 EASTING: 609909.033

ROLL#194900005290100  
 8th CONC.

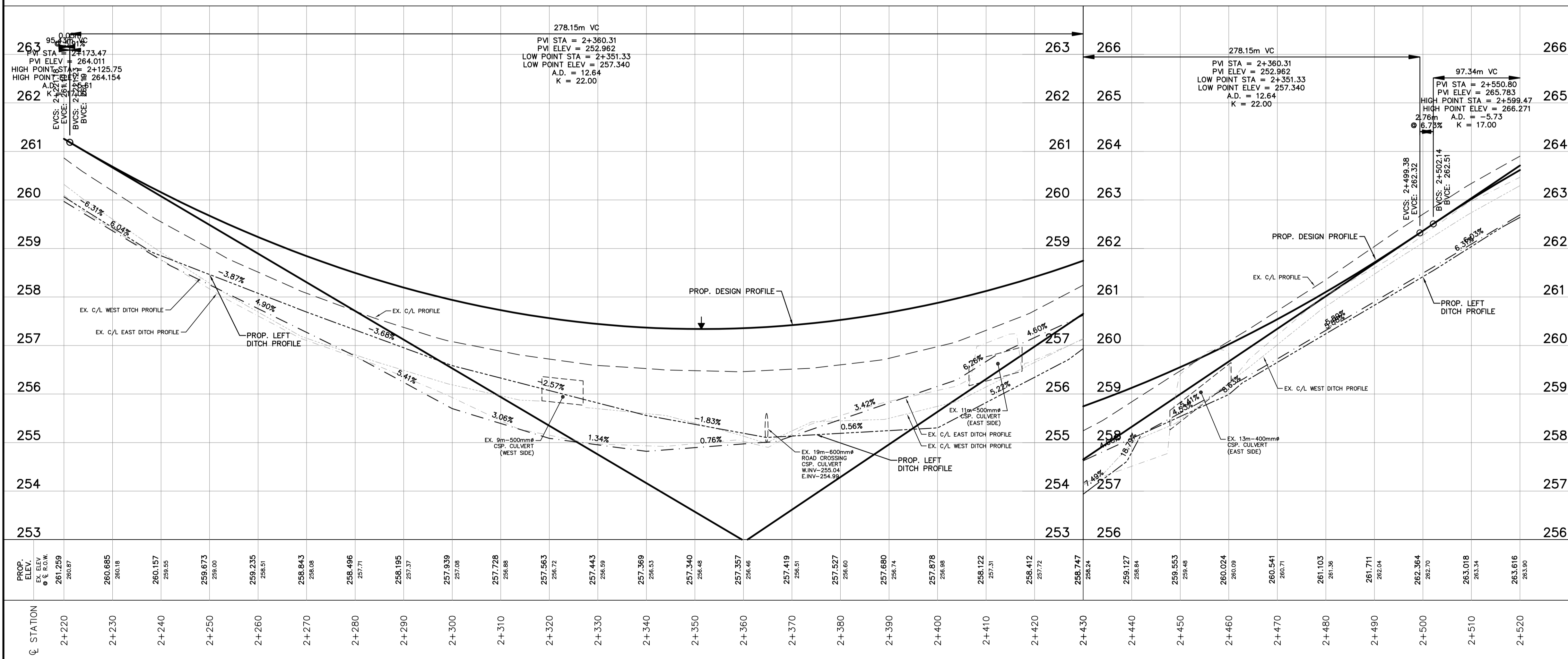
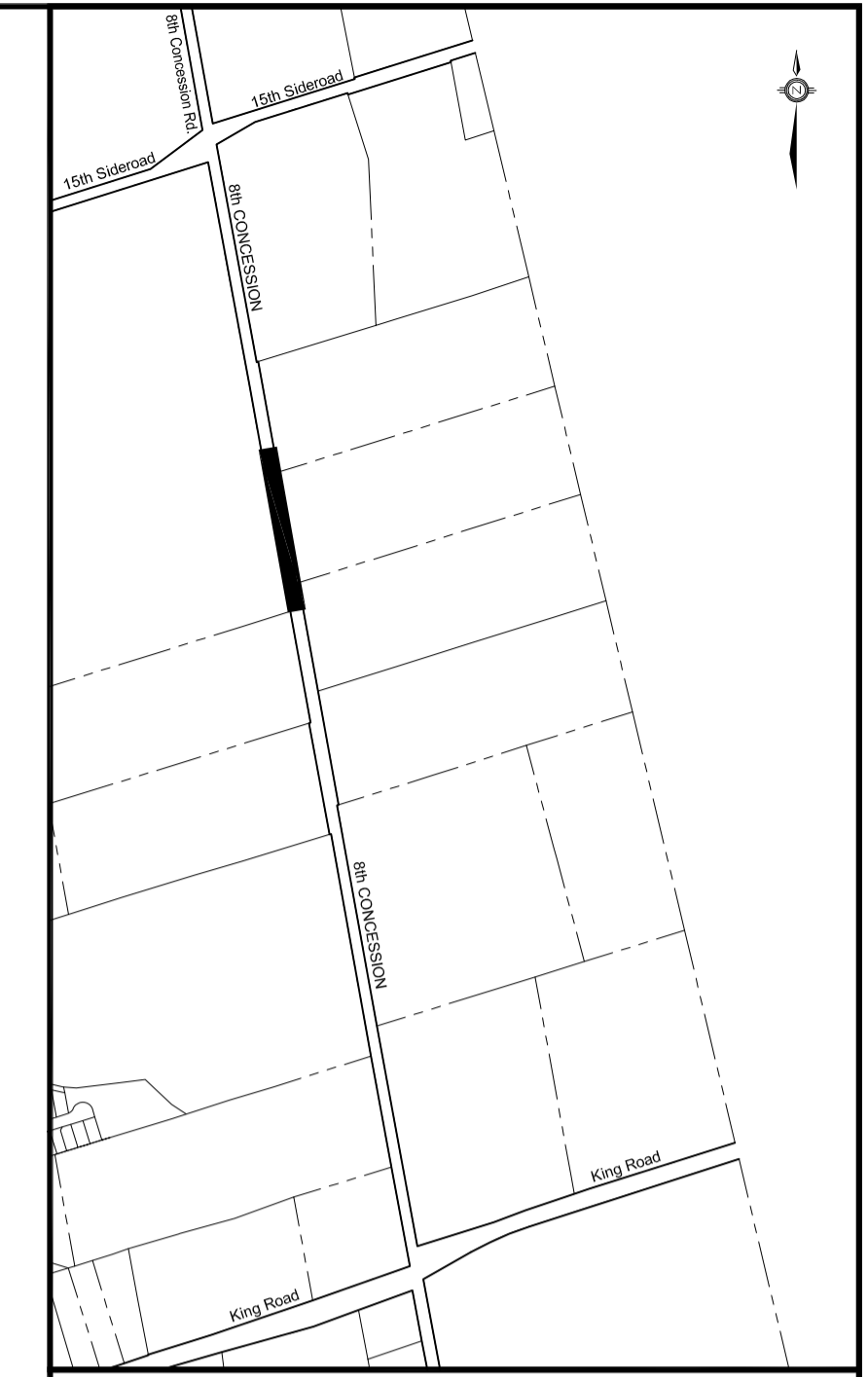
ROLL#194900005252000  
 8th CONC.

#13485

#13565

REFER TO DWG. 217102-PP4  
 MATCH LINE STA. 2+220

MATCH LINE STA. 2+520  
 REFER TO DWG. 217102-PP6



**NOTES**

**CONTRACT DRAWINGS**  
 Contractor must verify all dimensions and be responsible for same. Any discrepancies must be reported to the Engineer before commencing work. Drawings are not to be scaled. Drawings may not be used for any purpose other than that stipulated in the contract agreement between the contractor and the Engineer, without the express written consent of Anley & Associates Limited. Use of these drawings by any party for any other purpose is subject to the following caution.

**CAUTION:** The information contained in this drawing is solely for the intended recipient. Any copying, distribution or use by others without the express written consent of Anley & Associates Limited is prohibited. The recipient is responsible for confirming the accuracy and completeness of the information with the engineer. The recipient assumes all risks and liabilities associated with the use of the drawings. The recipient will give and hold harmless Anley & Associates Limited from any claims whatsoever associated with or related to the use of the drawings. The recipient will not reuse any portion of the drawings for any future project without the express written permission of Anley & Associates Limited.

NO.	REVISIONS	DATE	INITIAL

Not Valid Unless Signed And Dated

**PRELIMINARY**

SCALE: H= 1:500  
 V= 1:50

DESIGN: S.J.R.  
 DRAWN: R.A.W.  
 CHECKED: S.L.F.  
 DATE: FEB. 2018

**TOWNSHIP OF KING**  
 8th CONCESSION  
 ROAD RECONSTRUCTION  
 FROM 15th SIDEROAD TO KING ROAD

**PLAN & PROFILE**  
 8th CONCESSION  
 STA. 2+220 TO STA. 2+520

**Anley** CONSULTING ENGINEERS PLANNERS

CONTRACT No.      DWG. No. 217102-PP5

Plotted by: SRUSSELL on November 23, 2018 at 10:32am  
 File: V:\217102\Drawings\217102-Option-8th Conc.dwg Layout: PPS

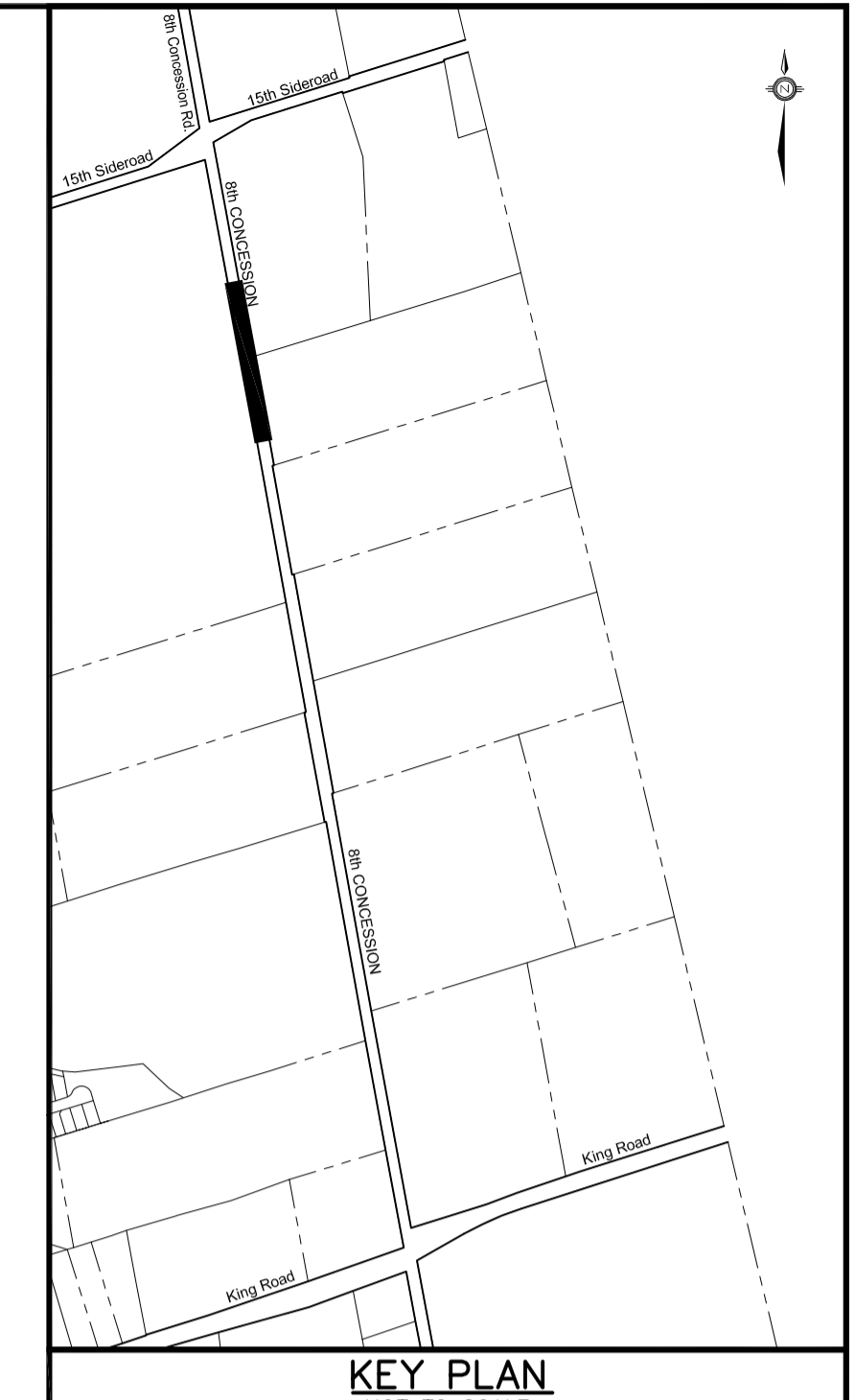
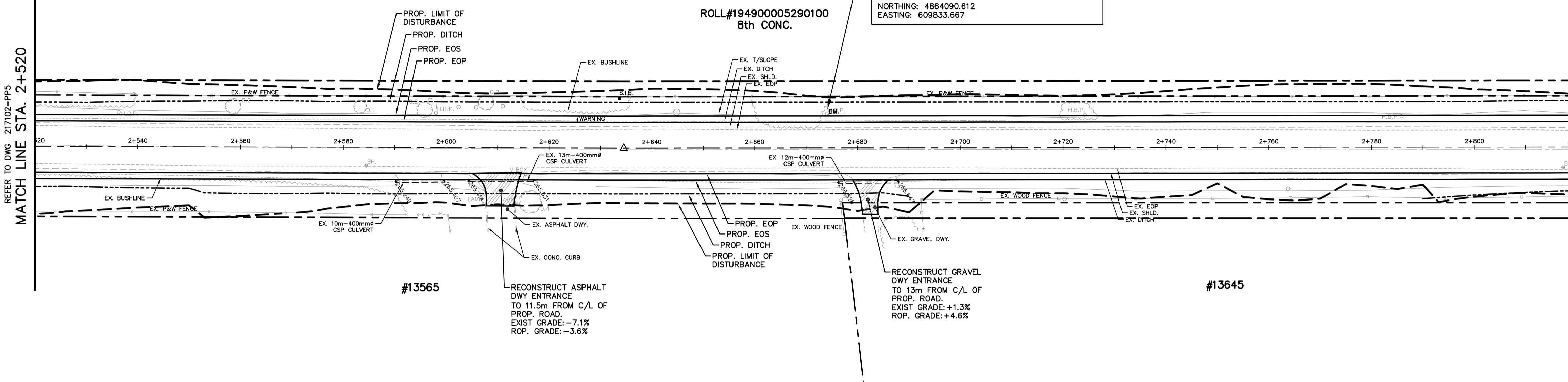
8th CONCESSION

**BENCHMARK - ELEV. 266.973**  
 NAIL & WASHER IN H.B.P.  
 NORTHING: 4864090.612  
 EASTING: 609833.667

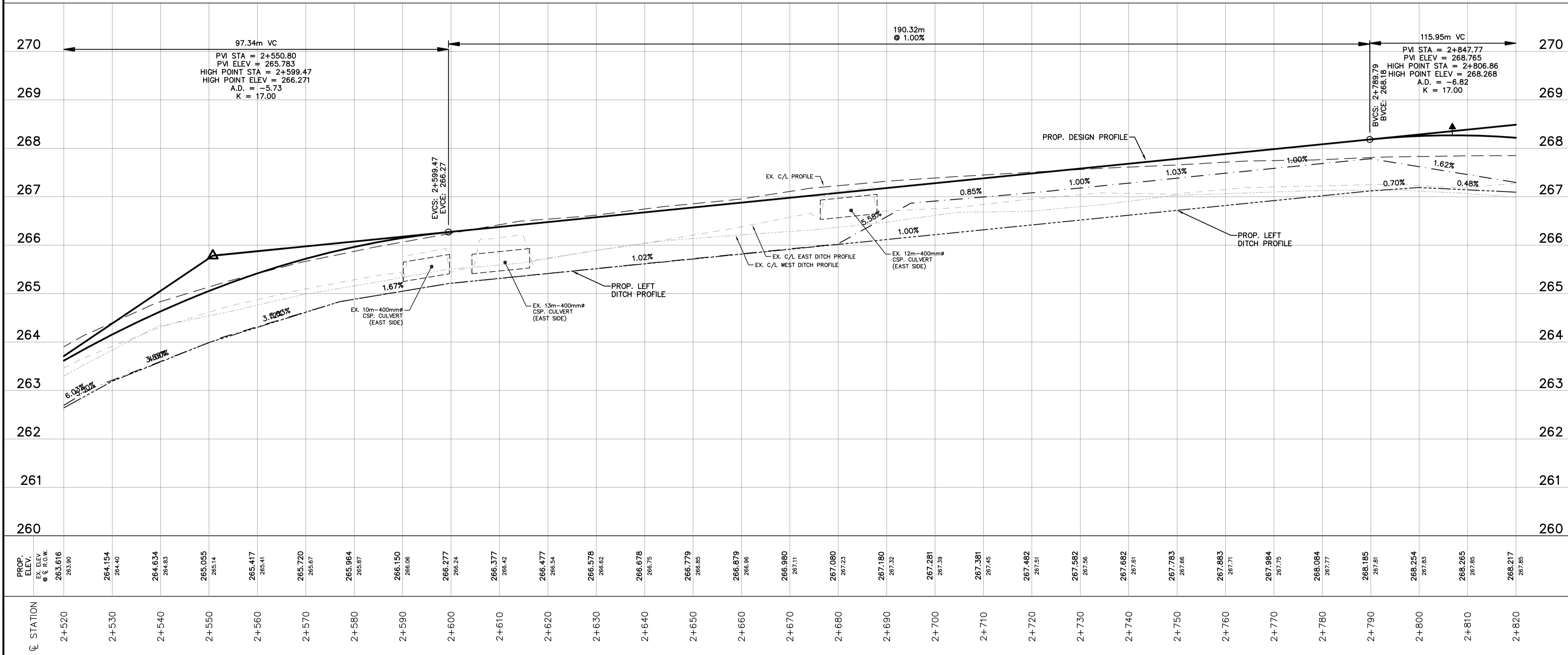
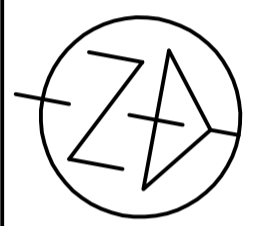
ROLL#19490005290100  
 8th CONC.

REFER TO DWG 217102-PP5  
 MATCH LINE STA. 2+520

MATCH LINE STA. 2+820  
 REFER TO DWG 217102-PP7



KEY PLAN  
 NOT TO SCALE



**NOTES**

**CONTRACT DRAWINGS**  
 Contractor must verify all dimensions and be responsible for same. Any discrepancies must be reported to the Engineer before commencing work. Drawings are not to be scaled. Drawings may not be used for any purpose other than that stipulated in the contract agreement between the contractor and the Engineer, without the express written consent of Anley & Associates Limited. Use of these drawings for any other purpose is subject to the following caution.

**CAUTION:** The information contained in this drawing is solely for the intended recipient. Any copying, distribution or use by others without the express written consent of Anley & Associates Limited is prohibited. The recipient is responsible for confirming the accuracy and completeness of the information with the engineer. The recipient assumes all risks and liabilities associated with the use of the drawings. The recipient will give and hold harmless Anley & Associates Limited from any claims whatsoever associated with or related to the use of the drawings. The recipient will not reuse any portion of the drawings for any future project without the express written permission of Anley & Associates Limited.

NO.	REVISIONS	DATE	INITIAL

Not Valid Unless Signed And Dated

**PRELIMINARY**

SCALE: H= 1:500  
 V= 1:50

DESIGN: S.J.R.  
 DRAWN: R.A.W.

CHECKED: S.L.F.  
 DATE: FEB. 2018

**TOWNSHIP OF KING**  
 8th CONCESSION  
 ROAD RECONSTRUCTION  
 FROM 15th SIDEROAD TO KING ROAD

**PLAN & PROFILE**  
 8th CONCESSION  
 STA. 2+520 TO STA. 2+820

**Anley** CONSULTING ENGINEERS PLANNERS

CONTRACT No.      DWG. No. 217102-PP6



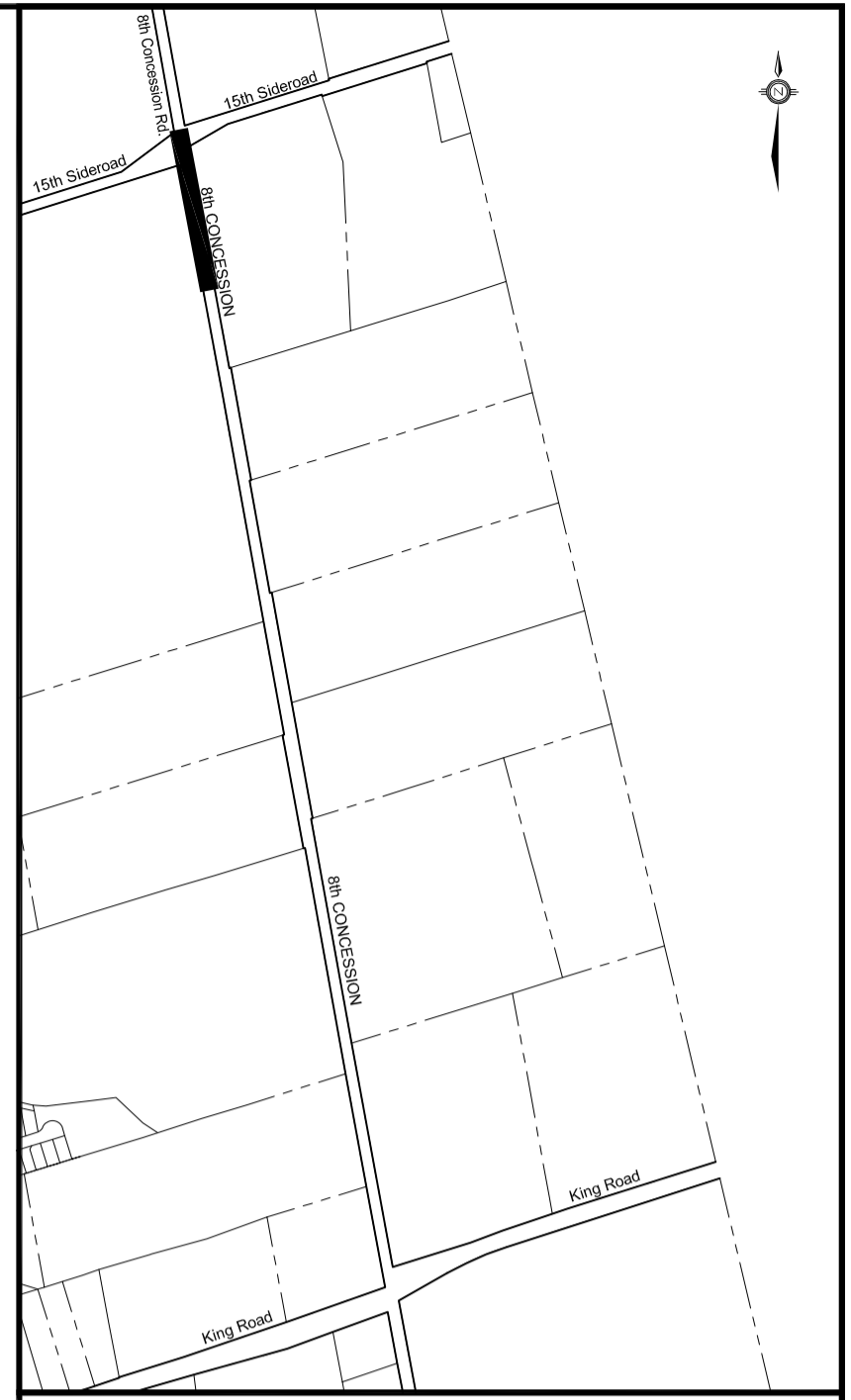
8th CONCESSION

BENCHMARK - ELEV. 262.292  
 NAIL & WASHER IN H.B.P.  
 NORTHING: 4864517.326  
 EASTING: 609754.317

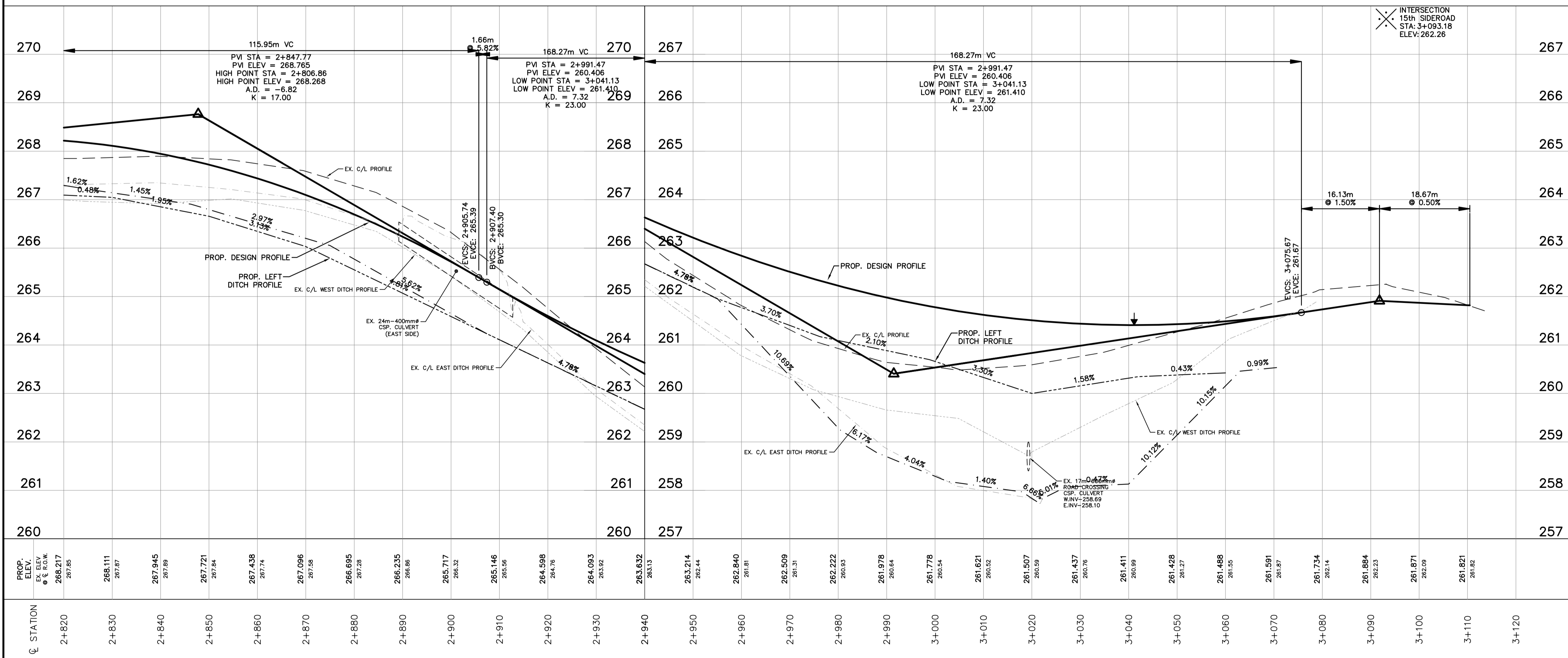
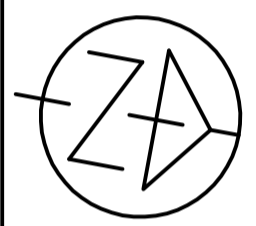
ROLL#19490005290100  
 8th CONC.

#13645

REFER TO DWG. 217102-PP6  
 MATCH LINE STA. 2+820



KEY PLAN  
 NOT TO SCALE



INTERSECTION  
 15th SIDEROAD  
 STA: 3+093.18  
 ELEV: 262.26

NOTES

CONTRACT DRAWINGS  
 Contractor must verify all dimensions and be responsible for same. Any discrepancies must be reported to the Engineer before commencing work. Drawings are not to be scaled. Drawings may not be used for any purpose other than that stipulated in the contract agreement between the owner/client and the Engineer, without the express written consent of Anley & Associates Limited. Use of these drawings for any other purpose is subject to the following caution.

CAUTION: The information contained in this drawing is solely for the intended recipient. Any copying, distribution or use by others without the express written consent of Anley & Associates Limited is prohibited. The recipient is responsible for confirming the accuracy and completeness of the information with the engineer. The recipient assumes all risks and liabilities associated with the use of the drawings. The recipient will give and hold harmless Anley & Associates Limited from any claims whatsoever associated with or related to the use of the drawings. The recipient will not reuse any portion of the drawings for any future project without the express written permission of Anley & Associates Limited.

NO.	REVISIONS	DATE	INITIAL

Not Valid Unless Signed And Dated

**PRELIMINARY**

SCALE: H= 1:500  
 V= 1:50

DESIGN: S.J.R.  
 DRAWN: R.A.W.  
 CHECKED: S.L.F.  
 DATE: FEB. 2018

TOWNSHIP OF KING  
 8th CONCESSION  
 ROAD RECONSTRUCTION  
 FROM 15th SIDEROAD TO KING ROAD

PLAN & PROFILE  
 8th CONCESSION  
 STA. 2+820 TO STA. 3+120

CONTRACT No.      DWG. No. 217102-PP7